



## MEDIA RELEASE

24 September 2019

### OCEANAGOLD SIGNIFICANTLY INCREASES EXPLORATION TARGET AT THE MARTHA UNDERGROUND IN NEW ZEALAND

(MELBOURNE) OceanaGold Corporation (**TSX: OGC**) (**ASX: OGC**) (the “Company”) is pleased to announce that further extensive drilling at the Martha Underground Project (the “Project”) at the Waihi Gold Mine (“Waihi”) supports an increase to the size of the exploration target, which is in addition to the existing resources. Additionally, the Company is pleased to release updated exploration results highlighting continued high-grade gold intersections from the Martha Underground.

#### Key Highlights

- Extensional drilling discovering larger areas of mineralisation
- Recent drilling achieving significant, high-grade intercepts that include:
  - **38.4 metres @ 8.1 g/t Gold**, 10.1 g/t Silver on Edward-Martha Veins
  - **11.9 metres @ 13.7 g/t Gold**, 32.9 g/t Silver on Empire Vein
  - **8.5 metres @ 17.8 g/t Gold**, 65.0 g/t Silver on Empire-Empire HW Veins
  - **8.1 metres\* @ 16.5 g/t Gold**, 35.0 g/t Silver on Royal Vein
  - **3.5 metres @ 31.7 g/t Gold**, 100.7 g/t Silver on Rex Vein
  - **2.9 metres @ 36.1 g/t Gold**, 90.5 g/t Silver on Rex Vein
  - **5.3 metres @ 19.2 g/t Gold**, 15.1 g/t Silver on Dreadnought Vein
  - **12.1 metres @ 7.6 g/t Gold**, 21.2 g/t Silver on Martha-Mary Veins
  - **15.1 metres\* @ 5.2 g/t Gold**, 64.9 g/t Silver on Welcome Vein
  - **5.4 metres @ 14.4 g/t Gold**, 153.4 g/t Silver on Alexandra HW Vein

\* Downhole length as true width not determined

Mick Wilkes, President and CEO of OceanaGold said, “Our investment in extensive exploration at the Martha Underground at Waihi continues to create significant value for shareholders. In addition to the current 331,000 ounces of Indicated gold resources and 667,000 ounces Inferred gold resources, we are now targeting an additional 8 to 10 million tonnes of ore grading 4 to 6 g/t gold.”

He went on to say, “We are currently working on an all-encompassing study that will capture the various projects we are contemplating for the Waihi Mine. The study will evaluate timing of new source feeds and potential upgrades to our existing processing facility. We expect to complete this study in the first half of 2020.”

“With the Martha Underground project fully permitted, currently in construction and with ongoing exploration drilling to further prove up and convert resources, we are moving closer to securing a long-term future at Waihi. The growth at Waihi also aligns well with the central government’s mandate to enhance the livelihoods of rural communities. The operation employs more than 350 staff and contractors and has contributed significant socio-economic benefits to the local economy.”

In August 2018, an exploration target ranging between 5 million and 8 million tonnes at a grade of between 4 and 6 g/t gold was announced for the Martha Underground Project. Subsequent surface and underground drilling within the exploration target volume resulted in substantial increases in Indicated and Inferred Resources which were reported on March 7, 2019. This resource is now subject to an extensive resource conversion drill program with a targeted completion expected in the first quarter of 2020.

Furthermore, the additional drilling and subsequent review of historical cross-cut sample data has resulted in an upward revision of the exploration target, this being potential mineralisation that is in addition to the existing resources. The increased exploration target now ranges between 8 million and 10 million tonnes at a grade of between 4 and 6 g/t of gold. This exploration target is based on the assessment of surface and underground drill data collected by the Company in addition to the significant amount of historical and archived geological and mine data from over a century of mining activity at Waihi.

The exploration target is conceptual in nature and insufficient exploration has been undertaken in the areas that this exploration target relates to estimate a mineral resource. It is uncertain if further exploration will result in the estimation of a mineral resource. The revised exploration target volume will be drill tested over the period of 2020 and 2021 as drilling capacity transitions from the current reserve conversion drill campaign.

In March 2019, a resource was reported for the Project of 2.1Mt at 4.84 g/t gold for 331,000 ounces of gold as an Indicated resource and 4.5Mt at 4.59 g/t gold for 667,000 ounces as an Inferred resource. Following this significant increase in mineral resource for the Project, drilling has continued from the two, 900m long, 920- and 800-metre level drill drives and from several surface locations (Table 1, Figure 2).

Since the commencement of the Martha Underground drill program, approximately 77,500 metres have been drilled to identify and define mineralisation along sections of the Martha, Royal, Empire, Edward and Rex veins (Figure 1) and associated mineralised structures that are expected to support the resource model and life of mine plan at Waihi. Since receipt of the Martha Underground consents (permits), approximately six underground and two surface rigs have been utilised to grow the Inferred Resource base and convert to Indicated Resources. To-date, approximately 60% of the planned drilling has been completed at the Martha Underground. Drilling is scheduled to continue over the next 12 months for resource conversion and increase the resource base through a combination of step-out and infill drilling.

Figure 1 – Long sectional oblique view showing Martha open pit, Martha underground, main target areas to date (yellow and pink) and current Martha underground resource areas (yellow).

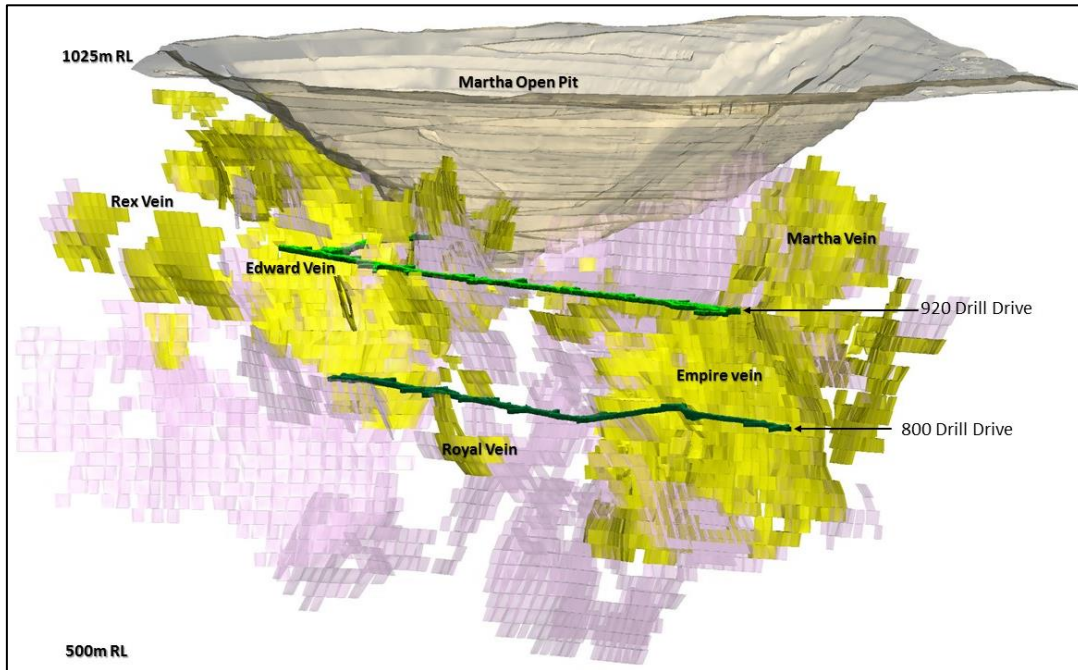
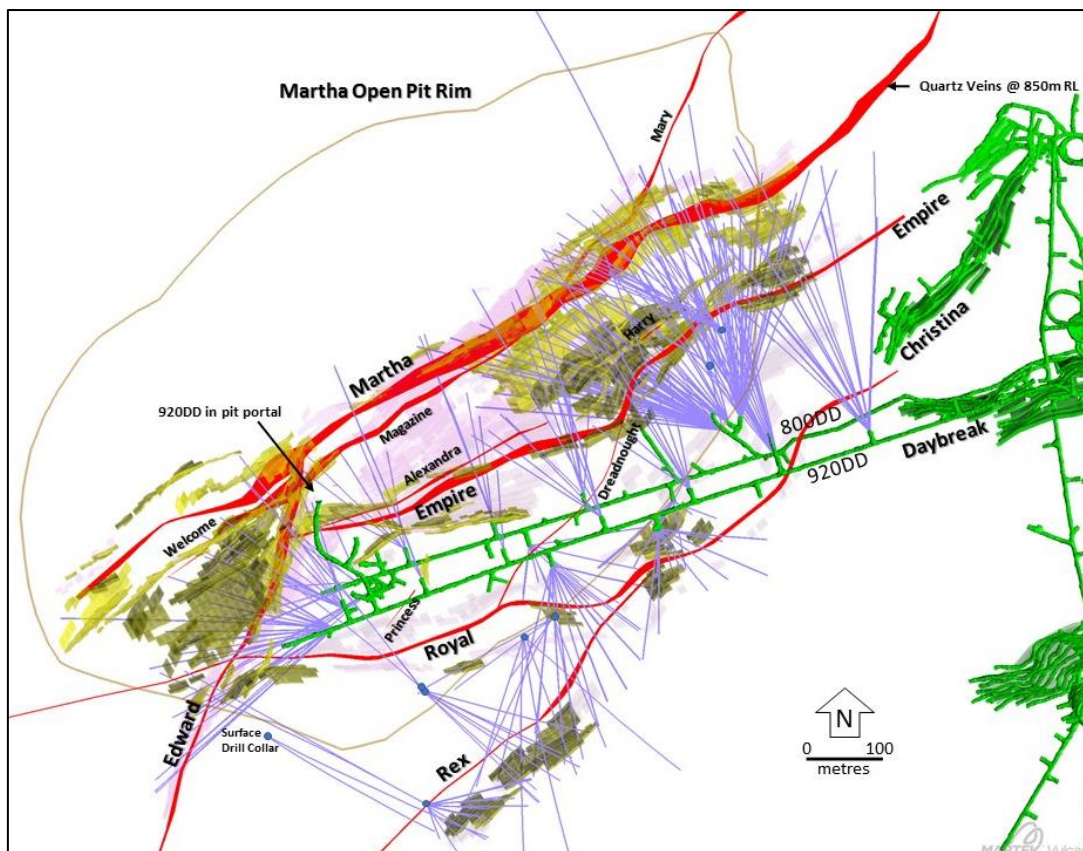


Figure 2 – Plan view showing holes drilled from August 2017 to July 2019 within the Martha vein system and the dominant targeted veins (Martha, Empire, Royal, Edward). Pink = remaining target areas, Yellow = current Martha underground resource areas, Green = recent and current development and mining areas



**Table 1 – Significant intersections from the Waihi Martha underground resource drilling.**

Hole ID	East# (metres)	North# (metres)	Collar RL (metres)	Az#	Dip	From (m)	To (m)	True width h (m)	Gold Grade (g/t)	Silver Grade (g/t)	Vein
800DC2MN1336	395788.6	643012.8	781.3	4.6	-59.6	294.30	300.60	6.3*	12.28	25.3	Loop No1
800DC2MR1362	395788.0	643014.1	783.5	350.1	10.6	101.40	112.40	8.5	17.79	65.0	Empire-Empire HW
800DC3RN1375	395720.5	642942.4	783.5	134.8	-20.9	81.50	82.90	1.3	22.60	50.0	Royal
800DC3RR1383	395719.4	642941.8	784.0	158.7	-4.2	61.40	62.80	1.3	20.47	19.2	Royal
800DC4MR1304	395671.0	642977.5	784.8	353.2	-28.1	160.90	165.50	3.4	8.76	18.5	Alexandra HW
800DC5MN1335	395558.9	642941.6	786.1	349.7	-39.7	140.30	144.40	2.8	8.87	16.0	Magazine
800DC5MN1345	395558.5	642940.2	787.0	337.0	-19.8	103.65	112.90	5.5	6.51	15.7	Magazine HW
800DC5MN1351	395557.3	642941.0	786.9	313.0	-16.9	95.20	98.00	2.6	12.55	18.5	Alexandra
800DC7MN1337	395496.2	642897.1	787.0	304.3	-62.7	123.40	133.80	6.7	6.15	12.7	Letter
800DC7MN1355	395495.6	642896.0	786.8	267.0	-61.6	182.60	191.10	4.3	15.39	25.5	Edward
800DC7MN1355	395495.6	642896.0	786.8	267.0	-61.6	211.00	225.60	7.3	4.30	9.9	Edward-Martha
800DC7MN1361	395495.7	642895.2	786.8	244.1	-55.6	209.90	220.80	6.9	5.58	11.1	Edward FW
800DC7MN1370	395496.6	642898.0	786.8	310.9	-49.5	115.80	120.70	3.1	10.26	20.7	Edward FW
800DC7MN1370	395496.6	642898.0	786.8	310.9	-49.5	124.40	169.50	38.4	8.08	10.1	Edward-Martha
800DC7MN1382	395497.8	642898.2	786.9	337.3	-60.0	118.50	121.90	2.2	9.95	14.3	Letter
800DC8MN1341	395510.8	642882.1	788.3	227.1	-2.1	325.40	341.50	8.1	4.37	13.0	Edward FW
800SP1MR1280	395968.1	643098.4	779.0	314.6	-25.5	190.20	204.00	12.3	4.52	12.4	Martha
800SP1MR1283	395967.7	643097.8	779.4	294.8	-9.1	144.80	149.80	3.5	7.64	7.1	Dreadnought
800SP1MR1283	395967.7	643097.8	779.4	294.8	-9.1	211.40	217.30	4.8	8.85	68.6	Harry
800SP1MR1294	395967.7	643097.9	778.9	297.9	-31.6	192.20	204.00	4.4	7.51	13.4	Dreadnought
800SP1MR1299	395967.9	643098.2	778.8	305.9	-36.4	194.70	197.30	2.6*	11.91	14.7	Empire
800SP1MR1299	395967.9	643098.2	778.8	305.9	-36.4	208.90	218.80	8.7	8.96	25.9	Martha
800SP1MR1305	395968.0	643098.4	778.9	315.1	-34.0	192.40	203.70	9.8	5.46	17.3	Martha
800SP1MR1307	395967.8	643098.1	779.5	303.1	-7.2	119.40	124.90	5.3	19.17	15.1	Dreadnought
800SP1MR1316	395967.8	643098.2	779.7	307.4	0.6	116.80	118.20	1.4	25.46	44.2	Dreadnought
800SP1MR1316	395967.8	643098.2	779.7	307.4	0.6	171.00	180.10	7.4	6.45	16.4	Harry
800SP1MR1317	395967.8	643098.4	779.2	307.1	-20.1	173.20	175.90	1.8	38.40	139.5	Empire
800SP1MR1317	395967.8	643098.4	779.2	307.1	-20.1	183.70	195.20	8.3	6.00	18.6	Empire
800SP1MR1317	395967.8	643098.4	779.2	307.1	-20.1	202.80	212.00	8.5	4.63	9.0	Martha
800SP1MR1322	395967.7	643098.2	778.5	304.0	-44.7	222.80	234.00	8.1	5.27	25.0	Martha
800SP1MR1324	395967.2	643098.6	778.2	294.4	-45.0	273.80	276.30	1.0	21.65	21.8	?
800SP1MR1328	395967.1	643098.4	778.3	288.2	-39.7	243.95	249.10	2.9	10.53	51.1	Martha
800SP3MR1293	395967.1	643097.4	778.7	349.4	-7.7	147.70	156.10	7.3	5.77	14.7	Empire
800SP3MR1300	395991.2	643115.5	779.4	13.2	-17.7	240.80	246.50	4.9	5.37	7.8	Empire HW
800SP3MR1300	395991.2	643115.5	779.4	13.2	-17.7	255.00	258.60	3.6	8.19	13.0	Martha
920SP2MR1285	396155.3	643097.3	922.2	324.3	-16.5	228.80	230.00	1.2*	66.70	45.8	Empire
920SP2MR1285	396155.3	643097.3	922.2	324.3	-16.5	348.80	351.40	1.7	17.95	80.2	Martha
920SP2MR1302	396156.1	643097.3	922.6	339.0	-6.1	361.00	373.40	11.1	4.15	7.3	Martha FW
920SP2MR1313	396155.4	643097.3	922.0	323.6	-21.7	249.00	249.50	0.5*	94.90	59.2	Empire
920SP3MR1314	396039.0	643058.1	921.1	346.2	-22.9	238.80	239.20	0.3	104.00	65.0	Empire
920SP3MR1327	396039.1	643058.3	921.2	344.6	-17.2	258.80	261.40	2.4	14.38	904.1	State FW
920SP7MN1290	395579.7	642900.4	922.5	339.4	-14.6	72.90	87.90	13.0	5.41	37.5	Empire
920SP8MR1315	395477.1	642861.2	924.8	291.7	-25.1	179.70	181.30	1.2	30.66	426.8	Welcome
920SP8MR1315	395477.1	642861.2	924.8	291.7	-25.1	182.90	186.60	2.0	27.55	247.3	Welcome
920SP8MR1315	395477.1	642861.2	924.8	291.7	-25.1	193.30	194.60	1.3*	41.11	163.0	Welcome
920SP8MR1323	395477.3	642861.3	924.5	294.7	-32.7	106.20	107.10	0.9	46.80	177.0	Edward
920SP8MR1354	395480.0	642863.5	925.5	326.8	-11.0	132.40	133.10	0.5	69.80	351.0	Edward
920SP8MR1363	395480.6	642863.4	924.9	340.5	-29.0	116.40	117.10	0.6	52.40	398.0	Empire
920SP8MR1363	395480.6	642863.4	924.9	340.5	-29.0	138.60	141.90	3.0	7.29	45.4	Empire FW

920SP9MN1286	395464.8	642831.8	925.9	227.7	-19.9	58.90	67.00	8.1*	16.46	35.0	Royal
920SP9MR1309	395464.3	642833.1	926.3	262.7	-11.1	147.00	156.90	5.0	15.26	62.6	Edward
920SP9MR1318	395464.1	642835.0	925.0	302.5	-40.4	124.80	136.80	7.7	12.69	20.9	Edward
920SP9MR1320	395464.4	642833.9	926.1	282.1	-15.7	92.10	99.10	6.8	7.32	31.7	Edward
920SP9MR1339	395464.5	642833.9	925.5	276.5	-43.2	130.30	133.80	3.5*	16.82	203.1	Edward
920SP9MR1339	395464.5	642833.9	925.5	276.5	-43.2	138.50	144.80	6.3*	14.60	58.3	Edward
920SP9MR1352	395464.6	642833.3	925.8	259.4	-32.5	118.90	129.80	5.1	9.01	26.8	Edward
920SP9MR1369	395464.8	642832.6	925.9	238.8	-28.8	83.60	84.10	0.4	86.90	2200.0	Royal
920SP9MR1376	395464.9	642832.3	926.0	233.4	-18.2	70.60	85.00	13.8	6.67	153.0	Royal
UW686	395746.8	642852.2	1117.1	323.6	-33.0	174.90	183.80	5.1	13.33	48.0	Princess
UW686	395746.8	642852.2	1117.1	323.6	-33.0	285.20	288.00	2.8*	22.90	52.0	Alexandra
UW689	395273.4	642735.4	1128.0	356.3	-35.1	214.15	229.25	15.1*	5.17	64.9	Welcome
UW691	395708.6	642827.9	1118.1	316.5	-37.2	241.40	258.20	11.9	13.69	32.9	Empire
UW691	395708.6	642827.9	1118.1	316.5	-37.2	337.80	349.70	5.4	14.39	153.4	Alexandra HW
UW696	395950.4	643247.6	1114.8	323.9	-45.1	244.00	257.80	10.1	4.12	13.1	Martha FW
UW696	395950.4	643247.6	1114.8	323.9	-45.1	280.10	282.60	2.3	12.52	47.3	Mary
UW699A	395961.0	643233.1	1114.8	300.3	-27.7	251.50	256.25	2.4	11.15	37.1	Martha
UW701	395961.3	643233.2	1114.9	308.1	-27.1	234.30	236.10	1.4	54.33	123.5	Martha
UW706	395583.4	642748.9	1123.3	134.4	-29.4	219.45	223.00	3.0	26.80	86.3	Rex
UW710	395582.9	642749.6	1123.4	132.1	-36.2	226.00	229.50	3.2	14.99	18.1	Rex
UW712	395583.7	642749.3	1123.4	125.1	-28.1	225.40	227.00	1.5	26.15	203.0	Rex
UW713	395961.7	643233.7	1114.9	295.0	-26.3	245.70	246.90	0.9	41.30	221.0	Martha
UW713	395961.7	643233.7	1114.9	295.0	-26.3	251.80	255.40	3.1	16.94	405.7	Martha
UW714	395584.5	642598.7	1113.3	104.1	-52.2	131.80	132.50	0.6	47.10	142.0	Rex
UW717	395584.4	642599.2	1113.4	94.6	-59.0	150.00	152.00	1.5	14.61	11.0	Rex
UW718	395583.8	642749.8	1123.3	116.3	-31.0	234.40	238.00	3.5	31.66	100.7	Rex
UW719	395584.9	642599.7	1113.4	86.7	-48.7	153.00	159.80	2.9	36.08	90.5	Rex
UW721	395583.3	642750.1	1123.3	115.5	-37.8	242.60	246.60	3.3	8.73	10.0	Rex
UW722	395584.9	642598.9	1113.4	74.8	-49.9	194.60	198.50	2.0	14.18	14.4	Rex
UW724	395963.7	643232.6	1114.9	297.7	-49.0	294.30	298.40	2.4	11.03	12.5	Martha
UW726	395951.9	643184.2	1115.0	301.4	-38.5	311.50	320.50	8.1	7.72	18.5	Martha
UW727A	395952.0	643182.9	1115.0	301.7	-44.2	310.80	328.60	12.1	7.57	21.2	Martha-Mary
UW727A	395952.0	643182.9	1115.0	301.7	-44.2	324.00	327.50	2.5	21.80	35.2	Mary
UW728	395580.7	642602.5	1113.5	300.3	-37.0	391.00	393.20	1.2	33.15	1297.4	Edward

\* Downhole length as true width not determined

All drill data in relation to Waihi can be found on the Company's website at <http://www.oceanagold.com/investor-centre/filings/>. In line with ASX listing requirements, JORC Code Table 1 for Waihi exploration results are appended to this release and available on OceanaGold's website at [www.oceanagold.com](http://www.oceanagold.com).

- ENDS -

For further information please contact:

**Investor Relations**

Sam Pazuki

Tel: +1 720 602 4880

[IR@oceanagold.com](mailto:IR@oceanagold.com)

**Media Relations**

Melissa Bowerman

Tel: +61 459 900 099

[info@oceanagold.com](mailto:info@oceanagold.com)



## **About OceanaGold**

OceanaGold Corporation is a mid-tier, high-margin, multinational gold producer with assets located in the Philippines, New Zealand and the United States. The Company's assets encompass the Didipio Gold-Copper Mine located on the island of Luzon in the Philippines. On the North Island of New Zealand, the Company operates the high-grade Waihi Gold Mine while on the South Island of New Zealand, the Company operates the largest gold mine in the country at the Macraes Goldfield which is made up of a series of open pit mines and the Frasers underground mine. In the United States, the Company operates the Haile Gold Mine, a top-tier, long-life, high-margin asset located in South Carolina. OceanaGold also has a significant pipeline of organic growth and exploration opportunities in the Americas and Asia-Pacific regions.

OceanaGold has operated sustainably since 1990 with a proven track-record for environmental management and community and social engagement. The Company has a strong social license to operate and works collaboratively with its valued stakeholders to identify and invest in social programs that are designed to build capacity and not dependency.

In 2019, the Company expects to produce between 500,000 to 550,000 ounces of gold and 14,000 to 15,000 tonnes of copper at All-In Sustaining Costs ranging between \$850 and \$900 per ounce sold.

## **Competent/Qualified Person's Statement**

The exploration results were prepared in accordance with the standards set out in the 2012 Edition of the 'Australasian Code for Reporting of Exploration Results, Mineral Resources and Ore Reserves' ("JORC Code") and in accordance with National Instrument 43-101 – Standards of Disclosure for Mineral Projects of the Canadian Securities Administrators ("NI 43-101"). The JORC Code is the accepted reporting standard for the Australian Stock Exchange Limited ("ASX").

Information relating to Waihi exploration results in this document has been verified by Lorraine Torckler, a Fellow of the Australian Institute of Mining and Metallurgy and an employee of OceanaGold. Mr Torckler has sufficient experience that is relevant to the style of mineralisation and type of deposit under consideration and to the activity being undertaken to qualify as a Competent Person as defined in the JORC Code and is a Qualified Person for the purposes of the NI 43-101. Mr Torckler consents to the inclusion in this public report of the matters based on their information in the form and context in which it appears.

## **Cautionary Statement for Public Release**

Certain information contained in this public release may be deemed "forward-looking" within the meaning of applicable securities laws. Forward-looking statements and information relate to future performance and reflect the Company's expectations regarding the generation of free cash flow, execution of business strategy, future growth, future production, estimated costs, results of operations, business prospects and opportunities of OceanaGold Corporation and its related subsidiaries. Any statements that express or involve

discussions with respect to predictions, expectations, beliefs, plans, projections, objectives, assumptions or future events or performance (often, but not always, using words or phrases such as "expects" or "does not expect", "is expected", "anticipates" or "does not anticipate", "plans", "estimates" or "intends", or stating that certain actions, events or results "may", "could", "would", "might" or "will" be taken, occur or be achieved) are not statements of historical fact and may be forward-looking statements. Forward-looking statements are subject to a variety of risks and uncertainties which could cause actual events or results to differ materially from those expressed in the forward-looking statements and information. They include, among others, the accuracy of mineral reserve and resource estimates and related assumptions, inherent operating risks and those risk factors identified in the Company's most recent Annual Information Form prepared and filed with securities regulators which is available on SEDAR at [www.sedar.com](http://www.sedar.com) under the Company's name. There are no assurances the Company can fulfil forward-looking statements and information. Such forward-looking statements and information are only predictions based on current information available to management as of the date that such predictions are made; actual events or results may differ materially as a result of risks facing the Company, some of which are beyond the Company's control. Although the Company believes that any forward-looking statements and information contained in this press release is based on reasonable assumptions, readers cannot be assured that actual outcomes or results will be consistent with such statements. Accordingly, readers should not place undue reliance on forward-looking statements and information. The Company expressly disclaims any intention or obligation to update or revise any forward-looking statements and information, whether as a result of new information, events or otherwise, except as required by applicable securities laws. The information contained in this release is not investment or financial product advice.

**NOT FOR DISSEMINATION OR DISTRIBUTION IN THE UNITED STATES AND NOT FOR DISTRIBUTION TO US NEWSWIRE SERVICES.**